

Zero Waste Communities in Action

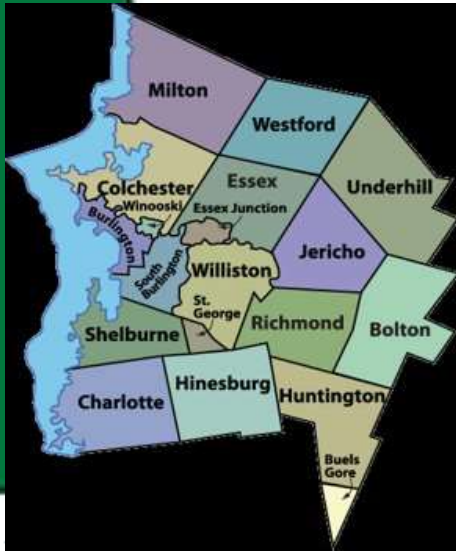
Presentation for Climate Smart Glacier Country

September 29, 2021

MICHELE MORRIS

Director of Marketing and
Communications





Who is CSWD?

- Municipal District created 1987
- 18 member towns
- Board of Commissioners
- 168,000 residents
- 7,400 businesses

We don't pick up your trash, we help you make less of it!

Burlington, VT

- Pop. 43,000
- 3 colleges
- major hospital network
- Top employers:
 - Educational services
 - Health care and social services
 - Accommodation and food services



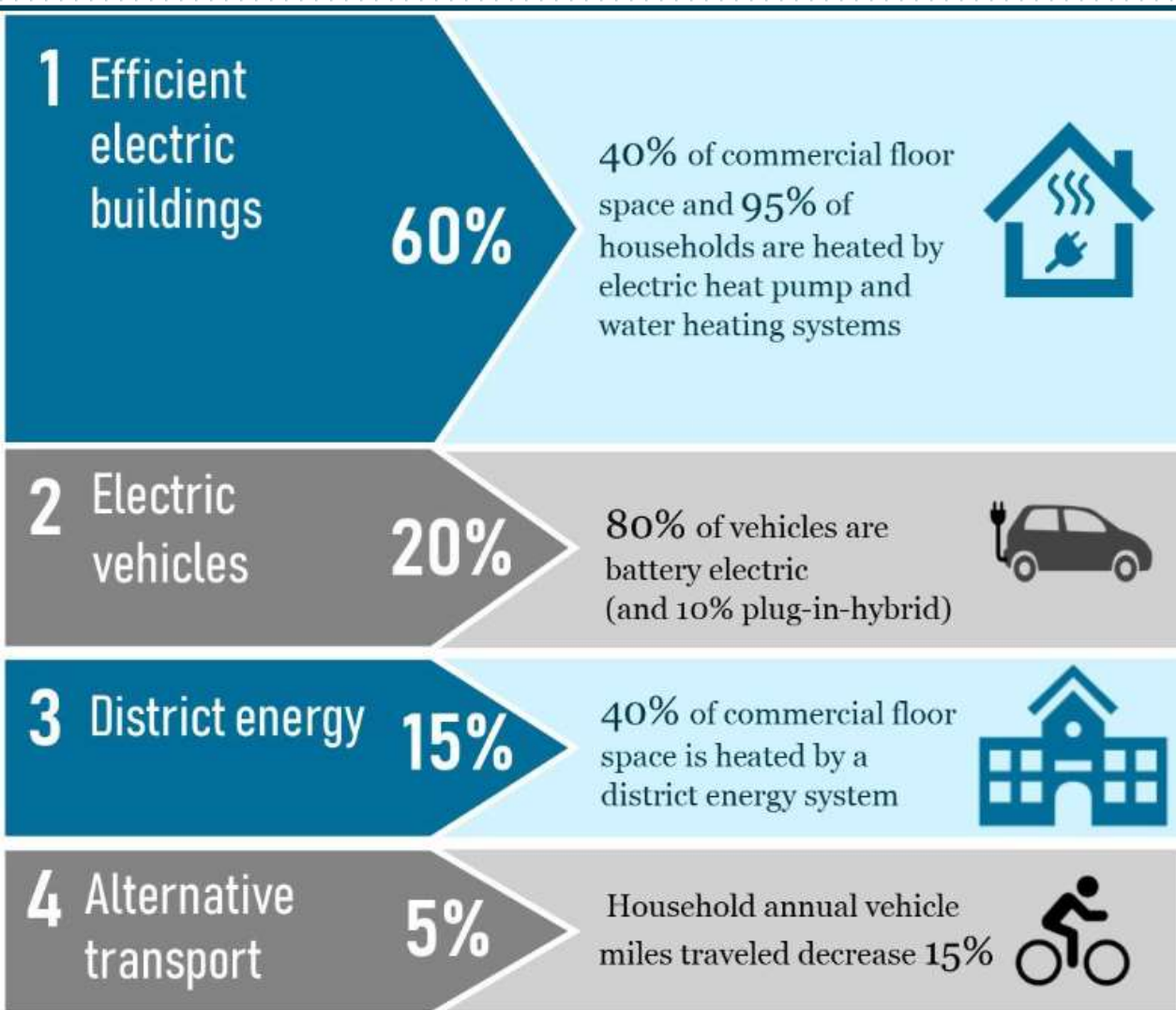
Burlington Zero Waste Initiatives

Burlington Electric Dept. first utility in the US to source 100% of electricity of renewable sources:

- Biomass
- Wind
- Hydro
- Solar

Burlington Zero Waste Initiatives

- Net Zero Energy City by 2030 goal



Percentages represent relative impact of pathways for reductions in fossil fuel use.

CSWD Facilities

**GREEN
MOUNTAIN
COMPOST**



**WE HAVE
A PLACE
FOR
THAT**

**DROP-OFF
CENTERS**



**MATERIALS
RECOVERY
FACILITY**



CSWD

Chittenden Solid Waste District



**ENVIRONMENTAL
DEPOT**



Amazing Outreach Staff



- 5000+ people reached annually with direct contact and assistance
- 181 K-12 school presentations and direct assistance
- 444 Waste Warrior hours volunteered at events
- 133 facility tours

Product Stewardship

Leader in Extended Producer Responsibility

- Mercury bulbs and thermostats
- Paint
- Batteries
- Electronics
- Carbonated beverage bottles
- Packaging and paper???

VT Single-Use Products Law

Effective July 1, 2020

- Bans most plastic bags
- Plastic straws provided only upon request
- Bans plastic stirrers
- Bans most EPS (commonly known as “Styrofoam”)

Act 148

Vermont's "Universal Recycling" Law

- 2015: Mandatory statewide recycling
 - Required in Chittenden County since 1993
- Phased-in ban on landfilling organics
 - **July 2020:** ALL VERMONTERS required to keep food scraps out of the trash

Make Recycling Work

- CSWD required since 1993
- Significant investments in education and outreach
- Incredible 7% residue rate at our single-stream MRF
- Access to recycling service and bins everywhere
- Require education of tenants, hauling customers, and event venues.



Target Organics

- Collecting food scraps at Drop-Off Centers for 20+ years
- Vermont's largest composting facility
 - 5,000+ tons of food scraps/year
 - 7,000 cubic yards of leaves
- Requirement to partner with food rescue organizations



Target Hazardous Waste

Make it easy and low-cost

- First program in nation with year-'round permanent AND seasonal mobile collection
- No fee for CSWD residents
- Easy appointment system



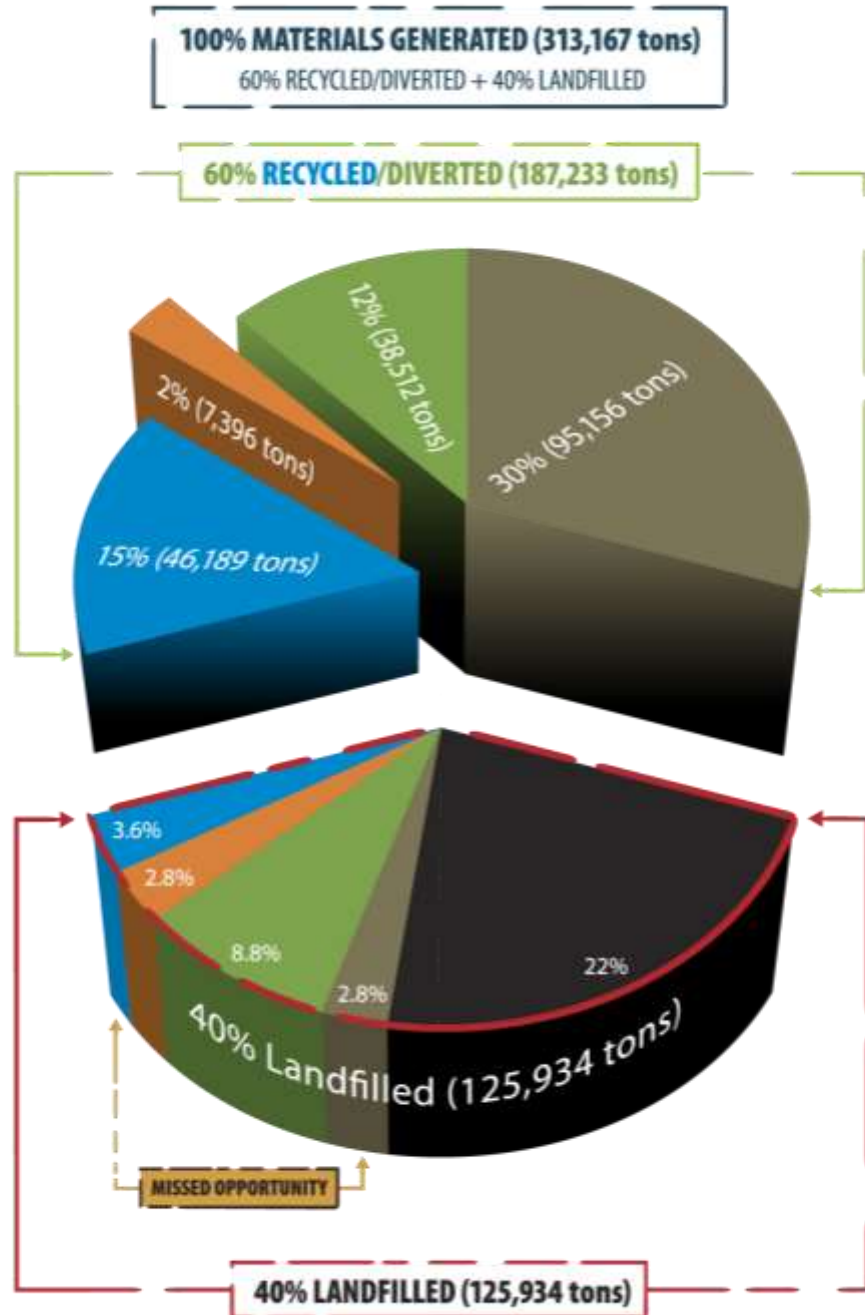
Local Color Paint

6,890 gallons of Local Color sold in FY20

- Reduces demand for production of new paint made from virgin materials
- Reduces carbon emissions by keeping production local
- Keeping perfectly good paint OUT of the landfill



How We're Doing (FY20)



Thank You

Michele Morris

mmorris@cswd.net

(802) 872-8100 x237



Chittenden Solid Waste District